

# Equalizer / Homogenizer

---

Code: P.402.xxx

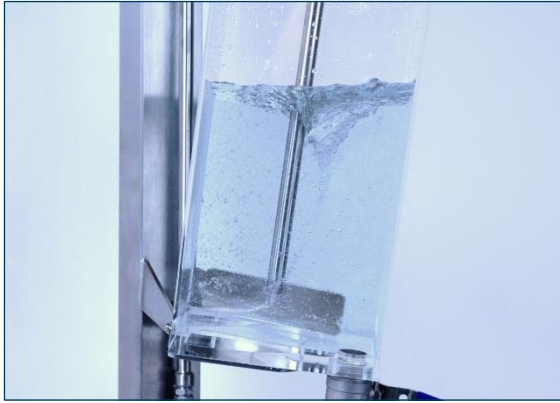
## Usage

*To stir permanently and homogenize disintegrated pulp samples.*

## Applicable standards

- Zellcheming Merkblatt V 6/61





Permanent and constant stirring

### Device description

The equalizer is made of sturdy stainless steel and lightweight acrylic glass. The smooth-running motor (30 dBA) ensures constant and even stirring. The standard compliant angle of inclination of the stirrer and the dynamic propeller shape keep the properties of the cellulose-fibers constant even after prolonged stirring. A water inlet on the upper edge of the acrylic container with max. capacity of 12l (max. filling capacity of 10l before spilling over while processing) makes filling and cleaning easy. Samples are taken out via a ball valve mounted in the bottom of the acrylic container.

### Process description

Fill the equalizer with the disintegrated sample and dilute the sample with water to a predefined level. Stir this solution constantly and take out a special amount by opening the ball valve (approx. 800 ml) each time you want to produce a sheet of paper.



Fast and easy sample taking via ball valve

### Connections

- Electricity: 230 V, 50 Hz AC
- Water: tap water connection

### Models

Code	Device with load cell
P.402.W	Equalizer – wall mounted
P.402.T	Equalizer – table top
P.402.W-REG	Equalizer – wall mounted with speed regulation
P.402.T-REG	Equalizer – table top with speed regulation